

CERTIFIED LAND CORNER RECORDATION

DESCRIPTION OF CORNER EVIDENCE FOUND, AND ORIGINAL RECORD (If known)

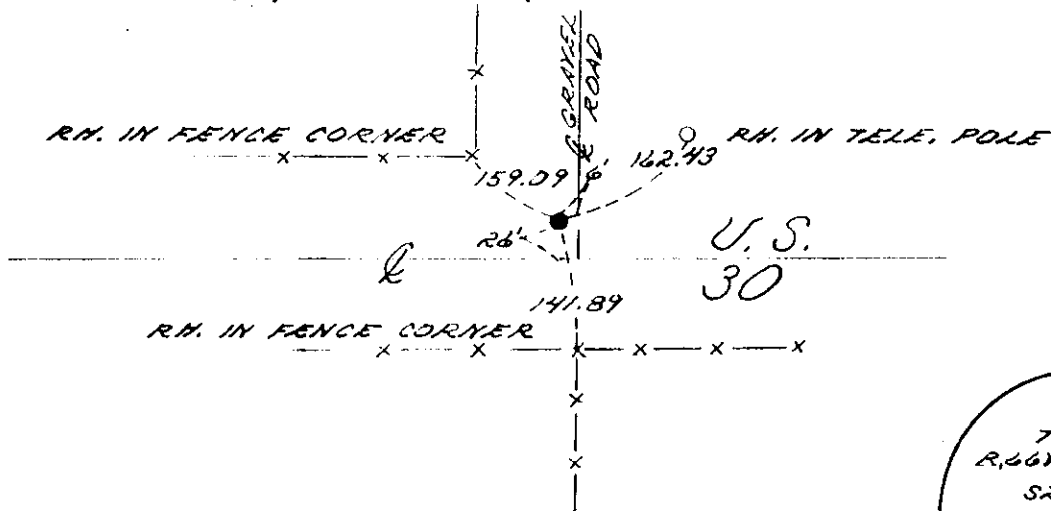
T. 14 N.
 24 | 19
 25 | 30
 R. 66 W., R. 65 W.

FOUND: NO EVIDENCE OF PREVIOUS MONUMENTATION
 SET: 1 1/2" x 18" LONG REBAR 3.2' BELOW SURFACE W/
 2" ALUMINUM CAP MARKED AS SHOWN BELOW FROM
 TIES OF RECORDATION FORM BY ED FRY DATED
 MAY 23, 1983

DESCRIPTION OF MONUMENT AND ACCESSORIES ESTABLISHED
 TO PERPETUATE THE ORIGINAL LOCATION OF THIS CORNER:

SEE TIES BELOW

SKETCH, WITH COURSE AND DISTANCE TO ADJACENT CORNER IF DETERMINED IN THIS SURVEY.
 (May Sketch or Paste Reproduction on Reverse Side.)



T. 14 N.
 R. 66 W., R. 65 W.
 S24 S19
 S25 S30
 1983
 L.S. 2500



I, JOHN A. STEIN certify that I have carefully performed or reviewed the work done on the diagrammed corner as reported on this recordation form and approve the same.

John A. Stein L.S. 2500
 Signature of Surveyor Registration No.

STATE OF WYOMING,
 Office of Clerk and Recorder,
 County of Tarasme

740808

This "corner record" was filed for record on the APR 12 1984 day of APR 12 1984, 1984, was noted on the cross-index plat and is assigned page No. _____, in book No. _____.

County Official				
Cross Index No.	✓ R-25	T. 14 N.	R. 66 W.	Mer. 64
	✓ R-1	T. 14 N.	R. 65 W.	Mer. 64
		T. _____	R. _____	Mer. _____
		T. _____	R. _____	Mer. _____
		T. _____	R. _____	Mer. _____
		T. _____	R. _____	Mer. _____
		T. _____	R. _____	Mer. _____

R-1[ⓑ] 1465

